

NANOSAT



User Manual

NP11G WiFi Bridge

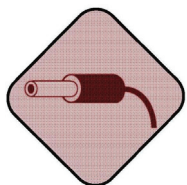
IEEE 802.11b/g

1. Introduction

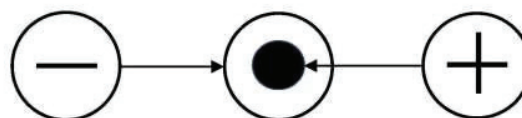
Thanks for choosing Nanosat NP11G WiFi Bridge. This portable device works best with Nanosat Receivers to access wireless network easily. A must have for Homestream, IP Movie (Video Club) and IP Radio.



NP11G provides users a combination of Ethernet network and power cable, NP11G uses the original power supply of IP Camera or some other IT products' power supply which has DC 2.0 power jack (5-15V, 1.5W). One power supply can power NP11G, as well as the IP Camera adapter.



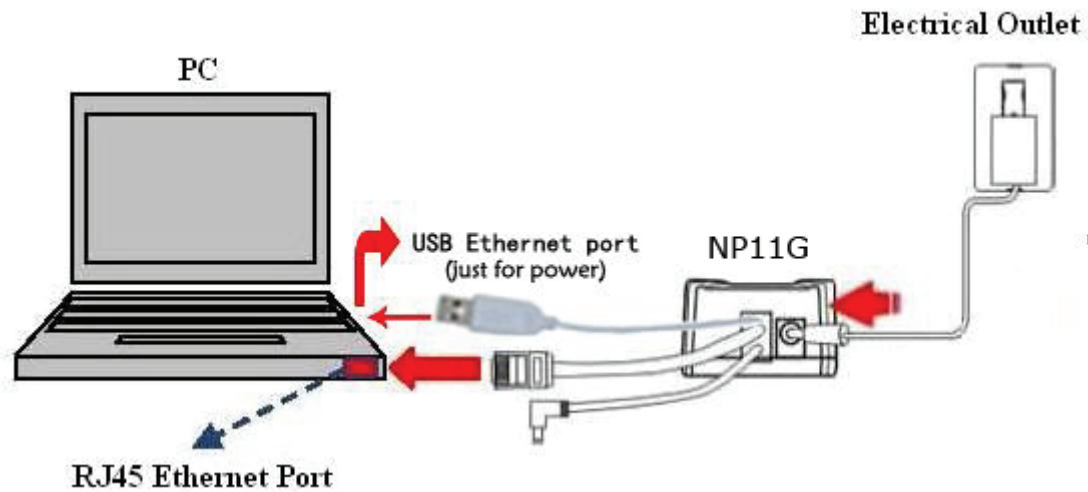
Please use power supply with the polarity as shown below. Power supply with different polarity will damage NP11G and the devices which the power supply belongs to. Seller will NOT be responsible for the loss caused by using the incorrect power supply. (Both Power Jack and Power Port are compliant with this polarity)



Correct Power Adapter Polarity

2. Setup

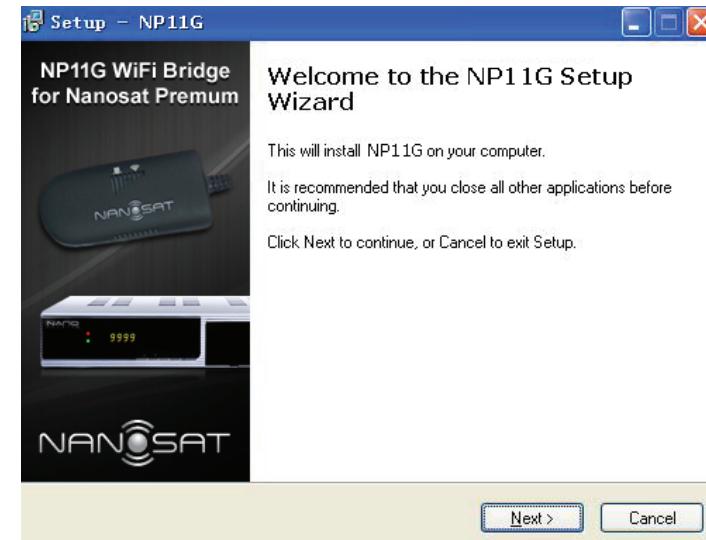
Please set this NP11G before using it, you can connect it to PC and run the NP11G_Setup.exe in the CD. The Physical Connection for Setup as below:



1) Please put into the CD-ROM, the system will automatically eject the disk and guide page, please refer to the right picture and click the corresponding label.



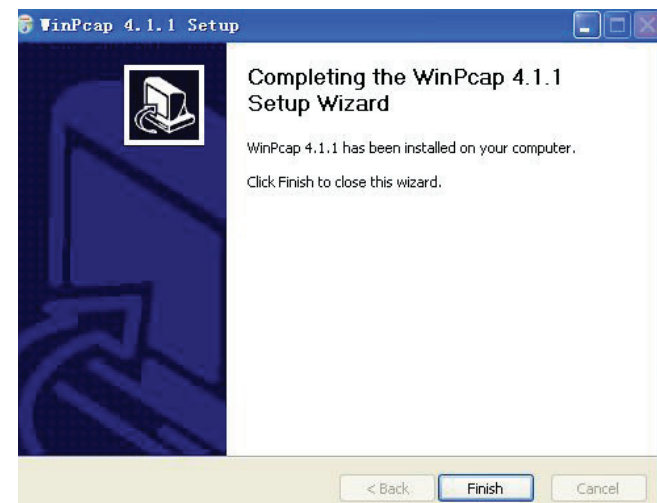
2) Please click Install Software label to run the set up program, if it's shown the right picture, please click Next, Click Cancel to exit the installation Wizard.



3) If it's shown the right picture, please click Yes to install-WINPCAP program.



4) Please click Next, don't need to do other settings until Finish.



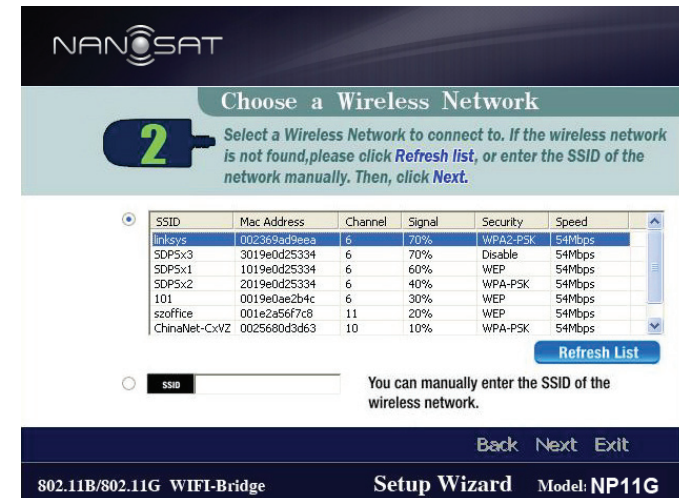
5) After the installation is complete, please double click the desktop icon , the right picture shows it is searching the product MAC.



6) Please click Next, don't need to do other settings until Finish.



7) The right picture shows the product has searched the-
WiFi network, please choose the correct WiFi Network.



WPA

WPA automatically uses TKIP with dynamic encryption keys. Enter a passphrase on this screen.

Encryption - TKIP is automatically selected as the encryption method.

Click Next to proceed, or click Back to return to the previous screen.

WPA2

WPA2 automatically uses AES with dynamic encryption keys (AES is a stronger encryption method than TKIP).

Enter a passphrase on this screen.

Encryption - AES is automatically selected as the encryption method.

Click Next to proceed, or click Back to return to the previous screen.

WEP (128-Bit) or WEP (64-Bit)

Enter a passphrase in the Passphrase field and click Next. If you want to manually enter a WEP key, leave the Passphrase field blank and click Next.

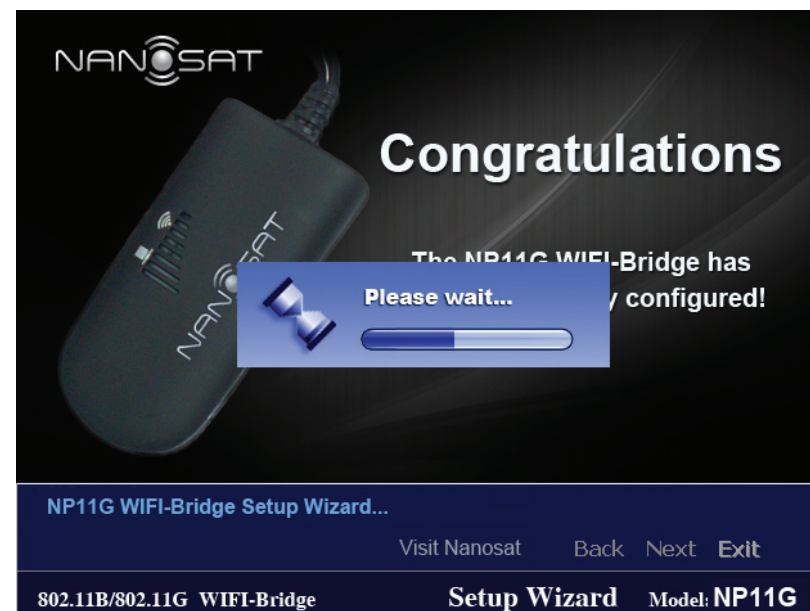
Key 1-4 - One to four fields will be displayed, depending on the level of encryption you have selected. The WEP key you enter must match the WEP key of your wireless network. For 64-bit WEP encryption, enter exactly 10 hexadecimal characters. For 128-bit WEP encryption, enter exactly 26 hexadecimal characters. Valid hexadecimal characters are “0” to “9” and “A” to “F”.

Key Index - The default transmit key number is 1. If your network’s access point or wireless router uses transmit key number 2, 3, or 4, select the appropriate number from the Key Index drop-down menu.

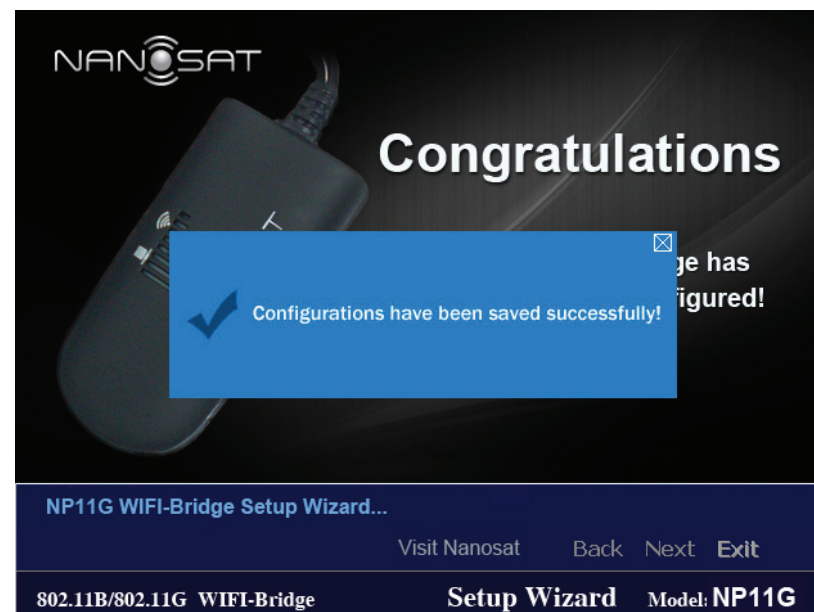
Click Next to proceed, or click Back to return to the previous screen.

Make sure the Bridge's Wireless LED is solidly lit or flashing. This indicates that the Bridge has connected to the wireless network. If the attempt succeeds, proceed to screen 12. If the attempt fails, you have two options offered by a pop-up screen. Click the Yes button to save the new settings and proceed, or click the No button to return to the Choose a Wireless Network screen and reconfigure the settings

10) The product is shown on the picture to obtain a gateway router.



11) The right picture shows the product to obtain the gateway router successfully completed all the configurations to this, please click Successfully associated to wireless icon, then click Exit to exit the installation Wizard.



To make sure NP11G is working, cut off all other internet connection to the PC (only reserve the connection between the PC and NP11G). If you setup NP11G successfully, the PC can view internet now.